

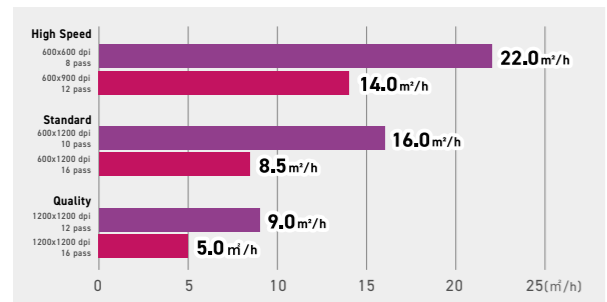
## Next-generation UV ink that's even safer for people and the environment

Approximately **30%** less odor than before, making it even easier to use!

**SVHC-Free**\*1 **CMR-Free**\*2,3

\*1 Substances of Very High Concern (SVHC), which may pose significant risks to human health and the environment.  
 \*2 Substances classified as Carcinogenic, Mutagenic, or Reprotoxic (CMR)  
 \*3 Indicates that as of March, 2026, it is not classified in the CMR category as an ink under the EU-CLP Regulation

### Productivity



### Specifications

Item	UJ330H-160	
Print Head	On-demand piezo head (2 staggered layout)	
Print Resolution	Y : 600, 1,200 dpi X : 600, 900, 1,200, 1,800 dpi	
Head Gap	Automatic nozzle-to-media distance adjustment 1.5 mm to 3.0 mm (in 0.1 mm div.), automatically adjusted by belt elevation.	
Maximum Print Width	1,610 mm (63.4")	
Media (Roll)	Supported Media Width	210 – 1,620 mm (8.3 – 63.8")
	Outer dia.	φ250 mm (9.8") or less
	Roll Weight	45 kg (99 lb) or less
	Core dia.	2 inches, 3 inches
Media (Rigid)	Supported Media Width	210 – 1,620 mm (8.3 – 63.8")
	Supported Media Length	280 – 2,500 mm (11.0 – 98.4"), Print Length: 270 – 2,490 mm (10.6 – 98.0") Control allows up to 3,100 mm (122.0"), Print Length: up to 3,090 mm (121.7")*1
	Media Thickness	50.8 mm (2") or less
	Media Weight	25 kg (55.1 lb) or less (7 kg (15.4 lb) / m² or less)
Interface	Ethernet 1000 BASE-T (recommended) / USB2.0 Hi-speed	
Automatic Adjustment	DAS2 Equipped	
Power Specifications	Single-phase AC 100 – 120 V ±10% / 8 A, Single-phase AC 200 – 240 V ±10% / 4 A, 50/60 Hz ±1% x2	
Power Consumption	Up to 800 W x 2; ≤ Inlet1 400 W / Inlet2 500 W during operation; ≤4.5 W x 2 in sleep mode	
Operational Environment	Temperature	20 – 30 degC (68 – 86 degF)
	Humidity	35 – 65% RH (no condensation)
	Accuracy Guaranteed Temperature Range	20 – 25 degC (68 – 77 degF)
	Dust Level	Equivalent to a typical office environment
Dimensions (W x D x H)	Main unit: 3,225 x 785 x 1,420 mm (126.9 x 30.9 x 55.9")	
	Main unit + 1 Roller table set: 3,225 x 2,664 x 1,420 mm (126.9 x 104.9 x 55.9")	
	Main unit + 2 Roller table set: 3,225 x 4,712 x 1,420 mm (126.9 x 185.5 x 55.9")	
Unit Weight	386 kg (851 lb)	

\*1 Operation beyond the specified supported range is possible, but not guaranteed.

#### Inks and substrates:

- For safe and reliable operation, please check media compatibility in advance.
- As physical properties of ink (adhesion, weather resistance etc.) are different depending on media, please be sure to have a print test in advance.
- Depending on the application, primers, other surface treatment or surface protection such as lamination may be necessary.

#### Safety notice:

- This product is equipped with UV irradiation equipment.
- Please pay attention to the following notes in order to use safely.
- Do not look directly into the UV light source nor place your hand, or expose your skin directly to the UV light source.
- During UV curing printing, some odor may occur. Ensure adequate ventilation at all time.
- Depending upon print mode, some VOC emittance from printed parts not yet cured and hardened may occur.
- In addition, please be sure to read and follow the instructions and guidelines of the manual carefully.

•Some examples shown in this catalog are artificial renderings. •Specifications, designs and dimensions shown in this catalog may be subject to change without notice for technical improvements. •The corporate and merchandise names in this catalog are the trademarks or registered trademarks of the respective corporations. •Inkjet printers use extremely fine dots, so colors may vary slightly after replacement of print heads. •Also note that when using multiple printer units, colors could vary slightly from one unit to another due to slight individual differences. •Please note that descriptions and data in this catalog are as of March 2026.

**Mimaki** MIMAKI ENGINEERING CO., LTD.  
 2182-3 Shigeno-Otsu, Tomi-city, Nagano 389-0512, Japan  
 TEL: +81-268-64-2281

### Mimaki Global Network

USA	MIMAKI USA, INC.	Europe	MIMAKI EUROPE B.V.
Brazil	MIMAKI BRASIL COMERCIO E IMPORTACAO LTDA	Indonesia	PT. MIMAKI INDONESIA
India	MIMAKI INDIA PRIVATE LIMITED	Australia	MIMAKI AUSTRALIA PTY. LTD.
Taiwan	MIMAKI ENGINEERING (TAIWAN) CO.,LTD.	China	SHANGHAI MIMAKI TRADING CO.,LTD.
Singapore	MIMAKI SINGAPORE PTE. LTD.	Thailand	MIMAKI (THAILAND) CO.,LTD.
Vietnam	MIMAKI VIETNAM CO., LTD.		

## Raster Link 7

Supports beautiful printing and smooth operation

- Improved reproduction of PDF special effects such as transparency
- Faster RIP processing of PDF data for enhanced productivity
- Consistent results with the Variable Print function
- Displays frequently used setting and pop-up windows

### Mimaki Cloud Technology PICT

PICT automatically collects operating status, ink usage, and error information, enabling accurate remote monitoring of printers and supporting more efficient business operations.

### Operate machines remotely

#### MRA (Mimaki Remote Access)

List ink type, heater temperature, and notification alerts on a smartphone or Windows-based PC. The machine can be operated remotely with the same feeling as the control panel of the actual machine.



- Production Management
- Ink Refill Planning
- Maintenance Scheduling etc...



### Ink

Item	Color	Item Code	Remarks
ELS-170 GREENGUARD Gold Certified ink	Cyan	ELS170-C-BA	1 L Bottle
	Magenta	ELS170-M-BA	
	Yellow	ELS170-Y-BA	
	Black	ELS170-K-BA	
	Light Cyan	ELS170-LC-BA	
	Light Magenta	ELS170-LM-BA	
	White	ELS170-W-BA	
ELS-175 GREENGUARD Gold Certified ink	Cyan	ELS175-C-BA	
	Magenta	ELS175-M-BA	
	Yellow	ELS175-Y-BA	
	Black	ELS175-K-BA	
	Light Cyan	ELS175-LC-BA	
	Light Magenta	ELS175-LM-BA	
	White	ELS175-W-BA	
LUS-210 GREENGUARD Gold Certified ink	Cyan	LUS21-C-BA	
	Magenta	LUS21-M-BA	
	Yellow	LUS21-Y-BA	
	Black	LUS21-K-BA	
	White	LUS21-W-BA	

### Options

Roller Table Assy	Ionizer - Require both items	
Roller Table Assy	Ionizer Unit 160	UJ330H Ionizer Connection Kit
OPT-01020	OPT-J0545	OPT-01024
*2 units per set		

Mimaki

Hybrid UV Inkjet Printer

# UJ330H-160



# Next Standard

01

### Expand your range of applications

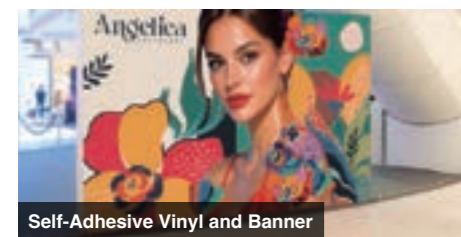
The UJ330H-160 supports roll media that were previously difficult to handle.

Even thin films and fabrics, which were difficult to transport with conventional grit rollers, can now be conveyed stably. This ensures high-quality printing without damaging the surface of the material.

Roll



#### Reliable performance for your existing applications



Self-Adhesive Vinyl and Banner

Indoor Signage



Wallpapers

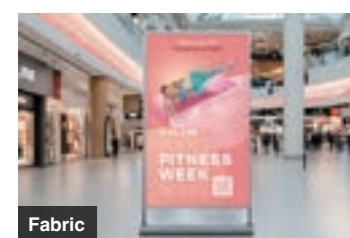
Retail Interior Décor



Self-Adhesive Vinyl

Floor Signage

#### Unlock new possibilities with challenging materials



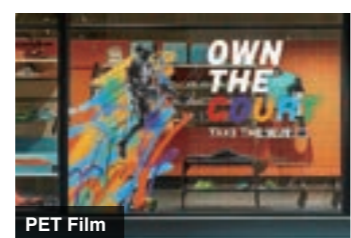
Fabric

Soft Signage



Soft PVC

Space Divider / Tent Signage



PET Film

Window Graphics



Synthetic Leather

Bags, Shoes, and Vehicle Seats

\*Material transport performance may vary depending on media type and specifications. Pre-testing is recommended before production.

02

### Boost your workflow efficiency

Achieve stable handling of rigid materials.

Direct printing onto a wide range of rigid board materials eliminates the need for costly outsourcing or labor-intensive mounting processes.

Rigid



#### Large-format boards and lightweight boards prone to warping



Aluminum Composite Panel

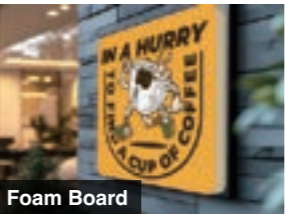
Outdoor Signage



Styrene Board

Display Panels

#### Thick signage materials



Foam Board

Channel Signage

#### Simultaneous printing of multiple boards



Reduce media changeover time and improve your overall workflow efficiency.

03

### Fast, Beautiful Output with 330 Quality

Equipped with high-density and high-definition 330 Series print heads in a staggered configuration, the UJ330H-160 delivers solid, uniform fills to smooth, finely detailed gradations with a practical productivity of 14.0 sqm/h\*.

\*When using CMYK + White + Clear or CMYK LcLm + White ink sets.



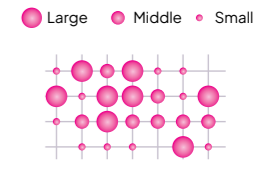
#### Precise control of ink droplets as small as 4 pl

Each ink droplet is placed exactly where intended, delivering high-quality images with no visible graininess.



#### Beautiful solid fills with high-density ink

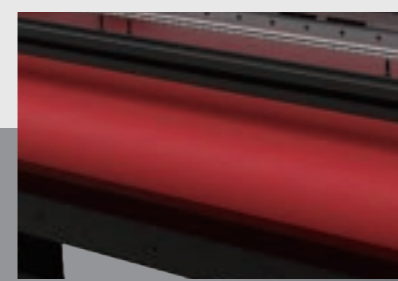
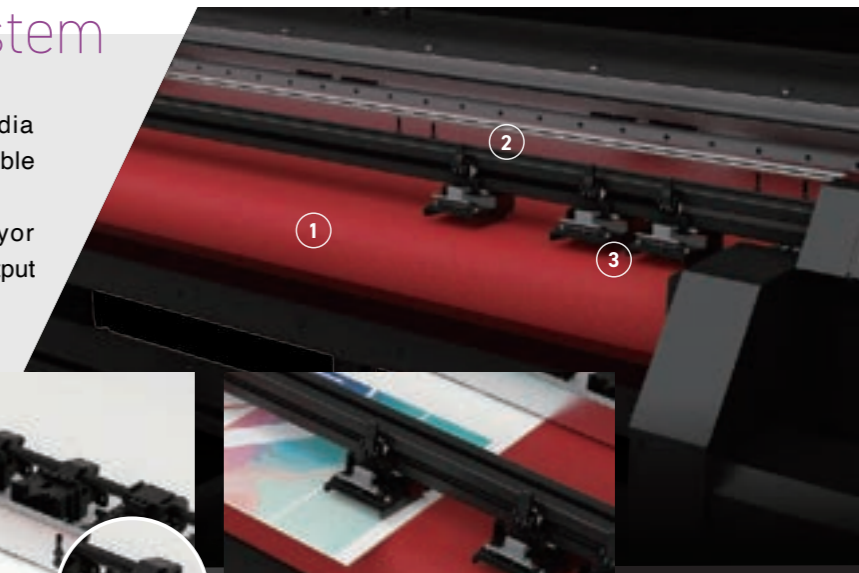
Three precisely controlled droplet sizes are combined to produce smooth, even solid areas. Larger droplets provide coverage, while smaller dots refine details to create rich gradations and outstanding image quality.



### UVx3-Way Conveyor System

Heat-free UV technology minimizes the risk of media warping and deformation during printing, ensuring stable media transport.

Combined with Mimaki's proprietary 3-Way conveyor system, the UJ330H-160 delivers reliable and stable output across a wide range of both roll and rigid media.



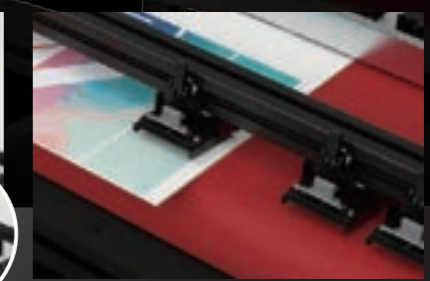
#### 1 Auto Vacuum

A powerful vacuum holds the media evenly across its surface during transport, preventing wrinkles and sagging.



#### 2 Rear Clamp Roller

Suppresses lifting and warping of rigid media, ensuring stable media transport alignment.



#### 3 Power Lock Roller

Suppresses warping at the front and edges of rigid media, ensuring stable transport even for large-format and warp-prone materials.

#### UV Printing adds value

#### High-opacity white ink



#### Clear Ink for gloss and matte finishes



#### Multi-layer printing expands creative possibilities (up to 5 layers)



Produce different designs on a single sheet—ideal for double-sided window graphics.